

LEON VALLEY PUBLIC LIBRARY TEXAS MUNICIPAL LIBRARY DIRECTORS ASSOCIATION
ACHIEVEMENT OF LIBRARY EXCELLENCE AWARD APPLICATION

CATEGORY 2. PROVIDE ENHANCED SERVICES TO THE PUBLIC DURING THE PAST YEAR EITHER THROUGH INCREASE IN SERVICE OR A CHANGE IN TYPES OF SERVICES.

A. MOBILE PRINTING

Printing services were enhanced with the inclusion of mobile printing. Members and visitors can now print from their phones and personal devices. View our mobile printing flyer is in [Attachment 1](#).

B. ONLINE LIBRARY CARD SIGN UP

New members can sign up for a library card through our online catalog. See a screenshot & link to online library card sign up form in [Attachment 2](#).

C. BOOKS TO NETFLIX BOOK CLUB

A new adult book club began where members read the books that inspired Netflix movies or series and met to compare them to the movies. See a screenshot advertising this program in [Attachment 3](#).

D. COVID 19 ARCHIVE PROJECT

The COVID 19 Archive project was started to document the experiences and impact of COVID 19 in the community. A link and flyer are included in [Attachment 4](#).

E. LIBRARY BROCHURE

Our library brochure has been updated to include our current services and to update to a cleaner look. An image of the new library brochure is included in [Attachment 5](#).

CATEGORY 2 ATTACHMENTS:

- [Attachment 1: Mobile Printing Flyer](#)
- [Attachment 2: Screenshot & Link to Online Library Card Sign Up Form](#)
- [Attachment 3: Screenshot & link to LVPL Online Events](#)
- [Attachment 4: COVID 19 Archives Project Link & Flyer](#)
- [Attachment 5: Library Brochure](#)

Computers, Printing, and Mobile Printing with the Leon Valley Public Library

Computer use:

If you are a Leon Valley Public Library member, you can log into any available computer with your **User ID** as your **library card** number and your **Password** is your **phone number**.

If you are a guest to the Leon Valley Public Library the library staff will provide you with a guest login. The **User ID** is the **T-Number** on the guest pass. **You Do NOT Need a Password to login.**

Printing:

To print from the library computer you will need to choose the correct printer. To do this, you may need to **click on See More** to find either the **black and white printer (BW CLOUD)** or **color printer (COLOR CLOUD)**.

Mobile Printing

If you have the file on your laptop or phone, you can print from your own device through email.

For black and white use address: bwleon@libdataprint.com

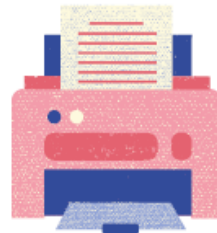
For color use address: colorleon@libdataprint.com

- If you need to print a file - send as an attachment
- If you need to print the body of an email, forward the email with no attachment.
- To print from a website, put the URL in the body of the email with no attachment.
- If you are printing an image (.jpg, .bmp, .png) put the desired dimensions in the subject line (**Correct: 4x6 Incorrect: Size 4"x6" or 4"x6"**) Any additional text may cause an error.

Black and White prints are \$0.10 per page

Color prints are \$0.50 per page.

We accept cash and check only.



[Back to Section 2.A](#)

[Back to Attachments](#)

ATTACHMENT 2: SCREENSHOT & LINK TO ONLINE LIBRARY CARD SIGN UP FORM

<https://leonvalley.biblionix.com/catalog/?signup=1>

Back to leonvalley.lib.tx.us

GO! CLEAR Help More S

Welcome

Catalog!

Online Signup

Sign up for a Leon Valley Library Card here:
Physical cards will be issued on your first visit to the library, and non-resident fees will also be collected. Upload proof of residency in the "Attach File" field, or bring to the library on your next visit!

Attach File : No file chosen
Only PDFs and images (JPGs) are accepted.

First Name :

Last Name :

Street Address :

Address Line 2 :

City :

State :

ZIP Code :

[Add Mailing Address](#)

Email :

Phone :

Password :

Confirm Password :

Drivers License :

Contact for overdue notices :

3-day notice before items are due :

Contact for reserve availability :

Contact for checkout receipts :

Library Account Terms and Conditions:

1. There is no fee for a resident of Leon Valley. Non-resident fees are \$20 per family or \$10 for seniors.
2. Proof of Residency must be shown when physical library card is issued.
3. Physical materials may not be checked out until a library card is issued.
4. Most materials are checked out for 14 days.
5. DVDs are checked out for a period of 7 days.
6. There is a limit of 25 items, including 5 DVDs, total per card.

I agree to the terms.

Your full name (your electronic signature):

Electronic Resources

- Accelerated Reader L...
Access AR information
- OverDrive — Lone Sta...
Downloadable books, a...
- TexShare Databases...
TexShare Databases p...
medicine, business, ge...
- Texas ILL System
Unable to find a title in...
an Interlibrary Loan re...
year old, print, limit 3...
request page] Need he...
- LibriVox
Public domain recordin...
anywhere!
- Project Gutenberg
Want 30,000 free ebook...
PDFs, HTML, epub, M...
- Learning Express
New version! Review s...
- Learning Express — A...
This center offers busy...
basic skills, earn a GE...

log

[Back to Section 2.B](#)

[Back to Attachments](#)

ATTACHMENT 3: BOOKS TO NETFLIX SCREEN SHOT

The screenshot shows a Facebook event page for 'Book to Netflix Book Club' organized by Leon Valley Public Library. The event is scheduled for Saturday, September 25th at 11 AM CDT. The featured book is 'The Last Kingdom' by Bernard Cornwell, with a promotional image showing a man on a horse and a man in a boat. The event page includes navigation tabs for 'About' and 'Discussion', and buttons for 'Insights' and 'Boost Event'. A 'Details' section on the left shows that 3 people have responded and the event is public. A 'Add a Few Final Details' panel on the right lists three steps: 'Share Event', 'Start Discussion', and 'Link a Group', with '0 of 3 steps completed'.

BOOK TO NETFLIX BOOK CLUB

25
SATURDAY AT 11 AM CDT

Book to Netflix Book Club
Leon Valley Public Library

The Last Kingdom by Bernard Cornwell

LEON VALLEY PUBLIC LIBRARY

Details

- 3 people responded
- Event by Leon Valley Public Library
- Leon Valley Public Library
- Public · Anyone on or off Facebook

Join us for our Book to Netflix Book Club on September 25th at 11am! We will be reading The Last Kingdom by Bernard Cornwell. A limited amount of books are available at the librar... See More

Literature

Add a Few Final Details

0 of 3 steps completed

Completing this list could help your event attract more guests.

- Share Event
- Start Discussion
- Link a Group

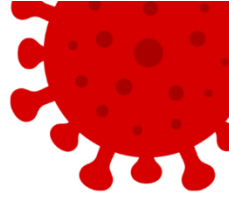
[Back to Section 2.C](#)

[Back to Attachments](#)

<https://www.leonvalley.lib.tx.us/covid19project>

COVID- 19

ARCHIVE PROJECT



Mission

We want to collect resources from our community to document the different experiences and impacts the COVID-19 pandemic has had on everyone. These resources will be housed in our Archives and/or online for future generations to explore and research.

What type of resources?

This mostly depends on you. We are looking for personal stories, journals, blogs, poetry, artwork, photographs, and other forms of expression to document this time in our lives. Unfortunately, we do not have space for physical artwork, but we will accept pictures of artwork.

Submissions

<https://www.leonvalley.lib.tx.us/covid19project>



[Back to Section 2.D](#)

[Back to Attachments](#)

ATTACHMENT 5: LIBRARY BROCHURE

**Learn.
Create.
Imagine.
Community.**

HOURS

Saturday: 10am - 2pm
Sunday: 2pm - 6pm
Monday: 10am - 6pm
Tuesday: 10am - 8pm
Wednesday: 10am - 6pm
Thursday: 10am - 8pm
Friday: 10am - 6pm

CONTACT

ADDRESS

6425 Evers Road
Leon Valley, TX 78238

PHONE

(210) 684-0720

FAX

(210) 684-2088

WEB

www.leonvalley.lib.tx.us

 facebook.com/leonvalleypubliclibrary
facebook.com/groups/lvplonline



LIBRARY CARD

Library cards are free to all Leon Valley residents and business owners. Non-residents can obtain a library card for a fee per year.

- \$10 Non-resident Senior Families
- \$20 Non-resident Families

TexShare users can obtain a library card free of charge.

Cash or Check Only.

CHECKOUTS

You can check out up to 25 items per card with a maximum of 5 DVDs.

Books, audiobooks, and nonfiction DVDs are due within two weeks.

Fiction DVDs are due within one week.

DIGITAL LIBRARY

The Leon Valley Public Library is part of the Lone Star Digital Library Consortium. To access our digital content through OverDrive download the Libby App to your device. Need help? Ask the staff for a Libby Guide.

ONLINE ACCOUNT

You can login to your online account with your library card number and password. Unless you have changed it, the password is your phone number.

You can access the catalog from our website.

STORYTIME

Adventurer's Club: Wednesdays 10:30am
Storytime and activities geared towards 3.5 - 5 years old.

Toddler storytime: Thursdays 10:30am
Storytime geared towards toddlers (18 months - 3 years old) with songs, fingerplays, and other activities.

VOLUNTEER OPPORTUNITIES

There are many opportunities to volunteer at the Leon Valley Public Library including helping at the library, the Library Board of Trustees, and the Friends of the Library. For more information, ask the library staff.

COMPUTERS & PRINTING

Computers are available for all guests with or without a membership.

Member login is your library card number and the password is your phone number. We also offer mobile printing - just ask staff how!

SERVICE FEES

B&W Printing: \$0.10 per page

Color Printing: \$0.50 per page

Scanning: \$0.10 per page

Local Fax: \$0.10 per page

Long Distance Fax: \$0.60 per page

Cash or Check Only.

MISC. SERVICES & PROGRAMS

- Carside services
- InterLibrary Loans (ILLs)
- Material Delivery*
- Crafts*
- Summer Reading*
- Special Programs*

*COVID and other community concerns may affect these services and/or the way they are handled.

[Back to Section 2.E](#)

[Back to Attachments](#)